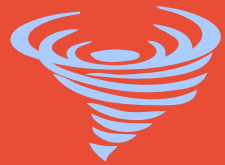


# NEIGHBORS HELPING NEIGHBORS



## Responding to Extreme Weather Events

One of the most visible impacts of **climate change** is **more intense and frequent extreme weather events**

### WHY CONNECT WITH NEIGHBORS?

46% percent of individuals expect to rely a great deal on people in their neighborhood for assistance within the first 72 hours after a disaster.

53% of people receive information for emergency preparedness through conversations with neighbors, friends, or family.



### NEIGHBORS CAN HELP BEFORE, DURING, AND AFTER

Know beforehand which members of the community may need help during an emergency.

Create a community network to share news about emergencies in your area.

After a disaster, make sure your neighbors are safe.

# HOW TO CONNECT YOUR COMMUNITY

Develop a community emergency network through email and/or text.



Determine how large your network should be to efficiently handle emergency situations (a block, street or collection of blocks, etc.).



Plan in-person or remote meetings to discuss plans for extreme weather emergencies.



Pick neighborhood leaders to guide emergent weather task forces.



# CREATE A PHONE TREE

Using the phone tree system can spread a brief message quickly and efficiently to a large number of people.

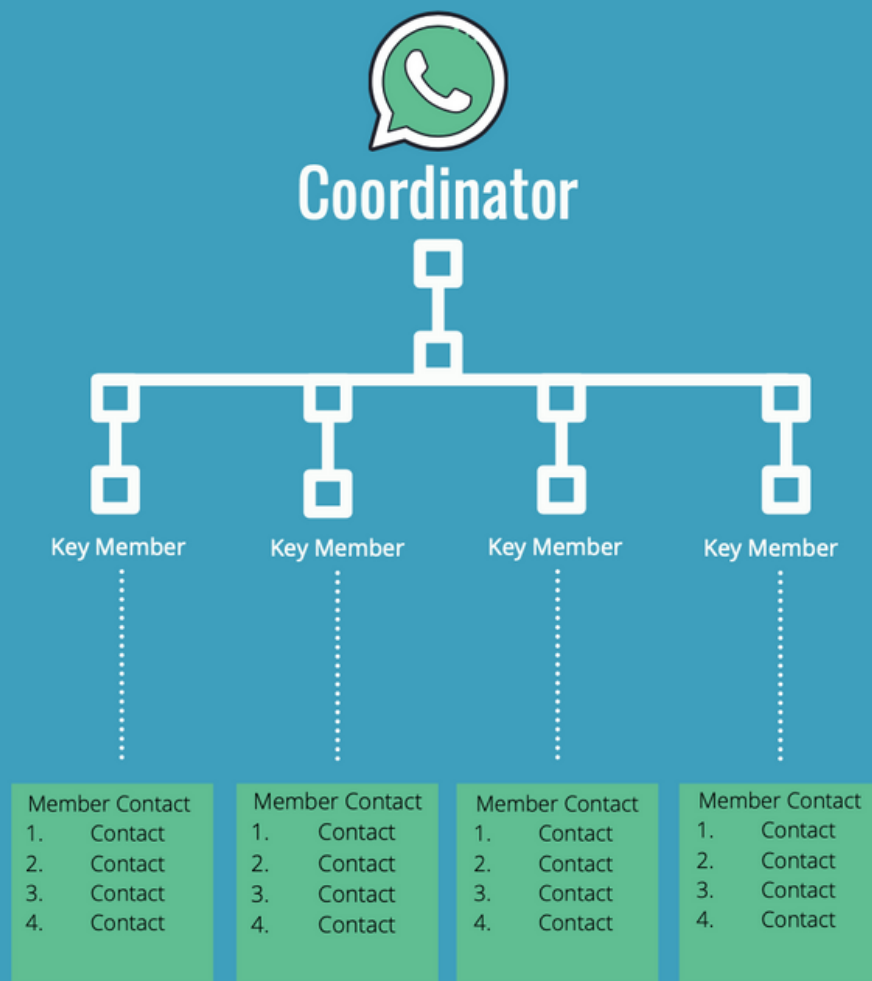


Make an organization chart for your phone tree (see below).

A coordinator will call key group members who each have a set list of neighbors to inform.

Make sure key group members are reliable to call others.

Have multiple ways to call community members.



For more information visit:

[www.climatecrew.org](http://www.climatecrew.org)

<https://www.ready.gov/neighbors>

[https://www.cdc.gov/cpr/infographics/00\\_docs/pfe-neighborhood-preparedness.pdf](https://www.cdc.gov/cpr/infographics/00_docs/pfe-neighborhood-preparedness.pdf)

<http://www.intermountainpro.com/wp-content/uploads/2011/01/Phonetree-IP.pdf>

<https://www.sustainableprinceton.org/star-neighborhoods/>